

Description:

The purpose of the section is to highlight the current applicable UMCP Design Standards for the design and installation of electric parking gate features.

Related Sections:

- TBD

Effective Date:

- June 14, 2013

Applicable Standards:

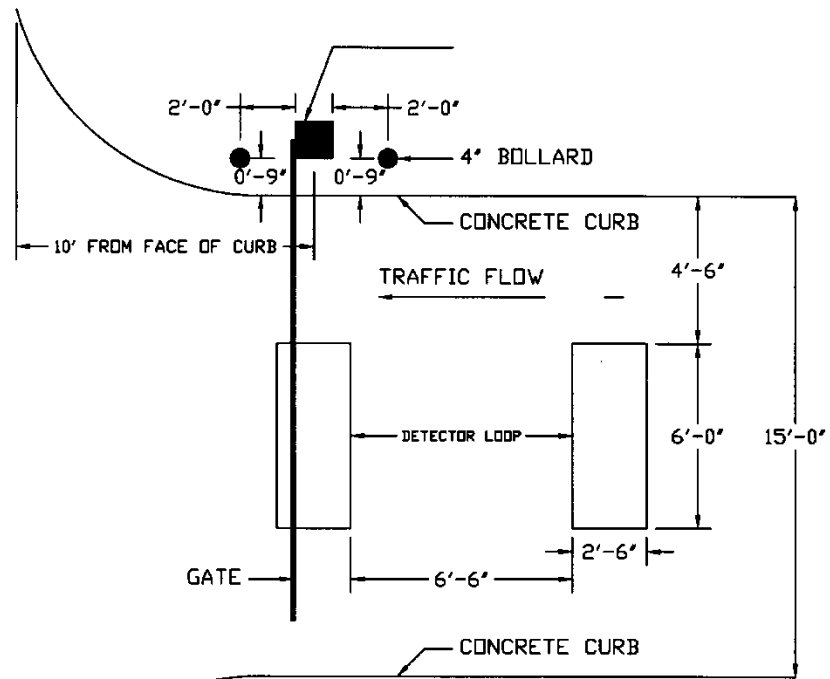
- TBD

General Requirements:

Site standards have been established for the following items:

- **Electric Parking Gates:**
 - Single gate (out)
 - Double Gate (in/out)
 - Material: Steel housed bases, wooden arms, a programmable control unit and detector loops.
 - Manufacturer: AMANO AGP 1700
Coordinate with Campus Parking
 - Related Details: Refer to detail numbers 1 and 2.

Electric Parking Detail #1

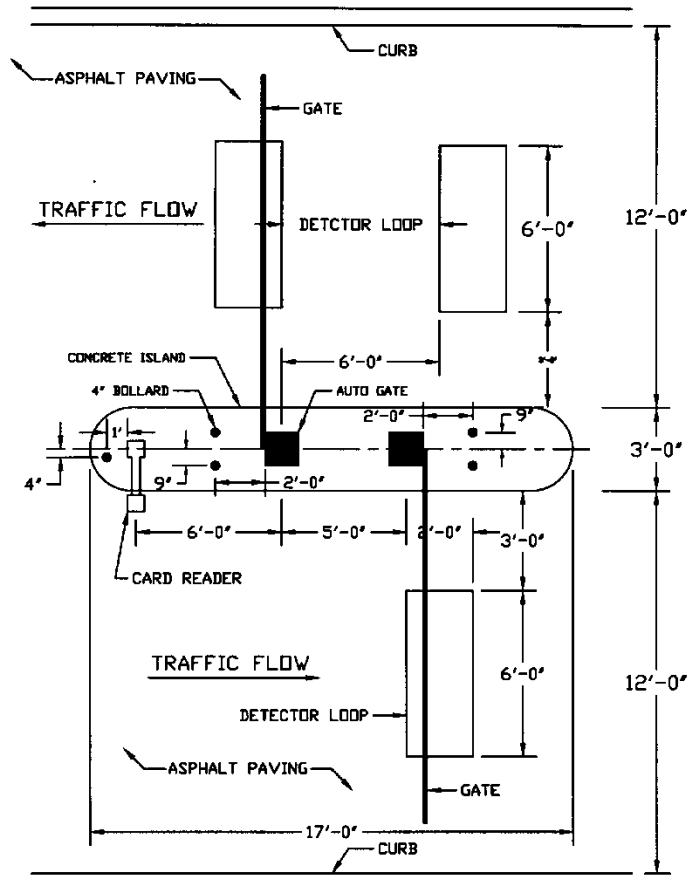


PLAN VIEW

SINGLE ELECTRIC PARKING GATE - INGRESS

NTS

Electric Parking Detail #2



PLAN VIEW

DOUBLE ELECTRIC PARKING GATE
INGRESS AND EGRESS
NTS