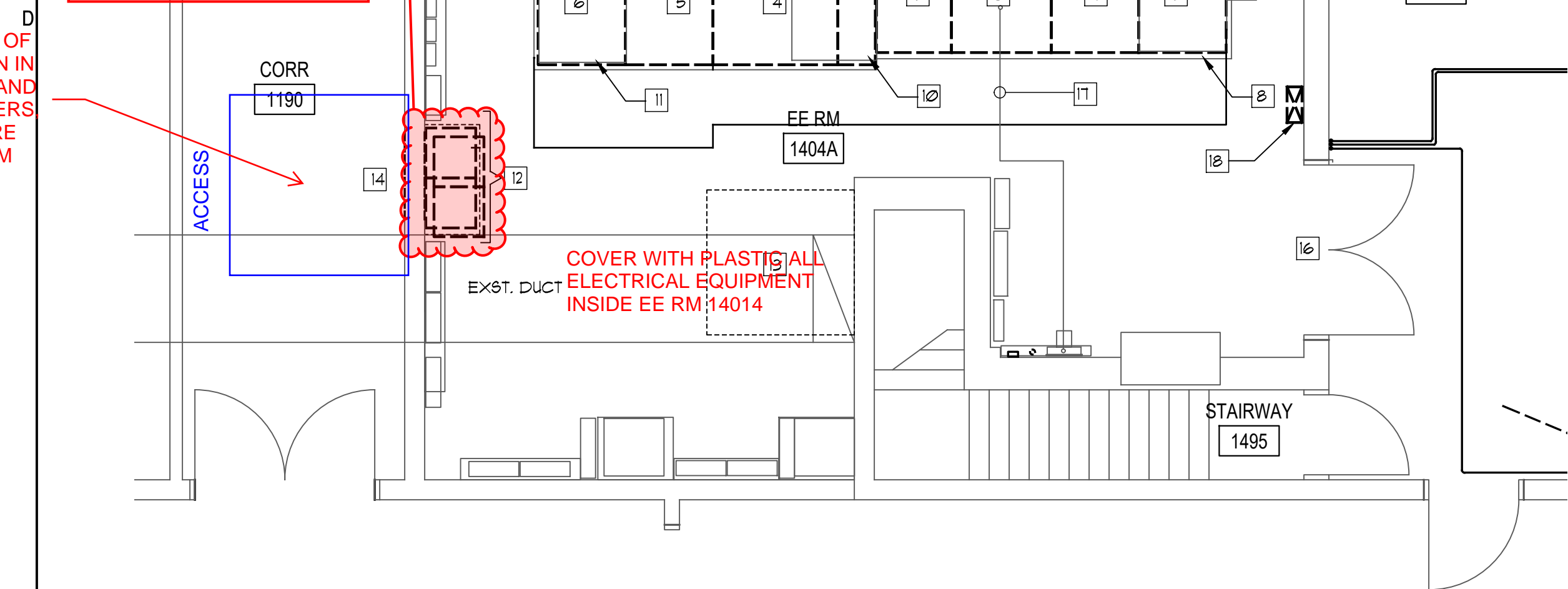


CONTRACTOR TO ENCLOSED PORTION OF CORR 1190 AS SHOWN IN BLUE WITH PLASTIC AND COVER THE DIFFUSERS SPRINKLER HEAD, FIRE ALARM DEVICES FROM DUST

APRIL 27, 2024 (SAT)  
CONTRACTOR WILL CUT THE BLOCK WALL FOR THE NEW DOOR OPENING - SET THE DOOR FRAME AND PLASTERING

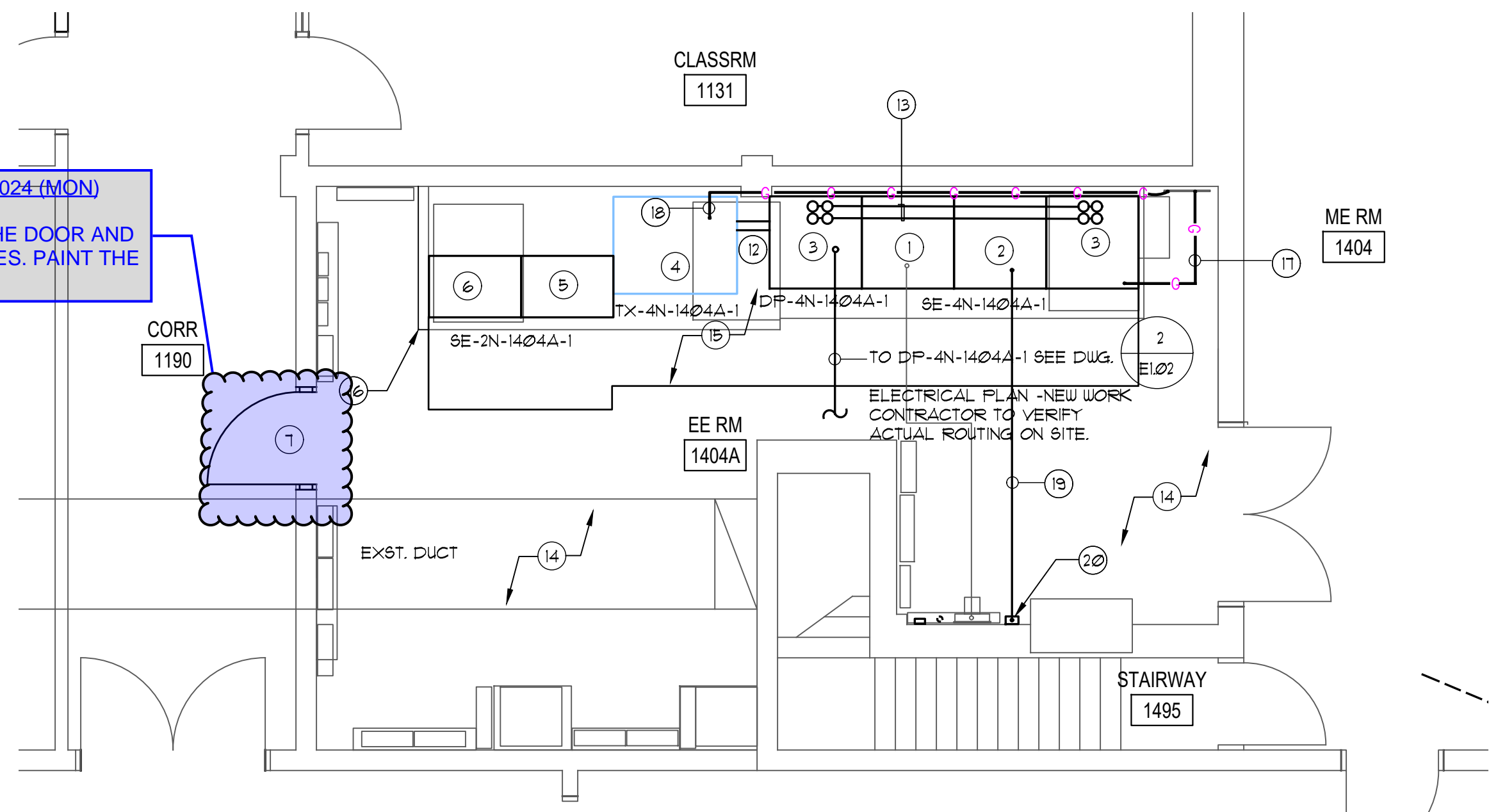
COVER WITH PLASTIC ALL ELECTRICAL EQUIPMENT INSIDE EE RM 1404

K:\UmdFac\Electrical Services\795\ Gudelsky Veterinary Center\Power\County Permitting Drawings\FM22 11427 Power\_07172022.dwg Jul 19, 2023 2:15pm



1 ELECTRICAL PLAN- DEMOLITION  
1/4" = 1'-0"

APRIL 29, 2024 (MON)  
INSTALL THE DOOR AND HARDWARES. PAINT THE DOOR.



2 ELECTRICAL PLAN- NEW WORK  
1/4" = 1'-0"

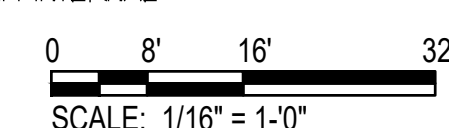
1 E1.01

KEYED NOTES: DEMOLITION

- GENERAL: PRIOR TO COMMENCE WORK, REMOVE ALL UNUSED MATERIAL SUCH AS CONDUITS, FITTINGS, WIRING JUNCTION BOXES, FULLBOXES AND ETC. ASSOCIATED WITH THE REMOVAL OF ELECTRICAL EQUIPMENT AS SHOWN ON THE DRAWINGS.
- 1 REMOVE SWITCHBOARD "SE-4N-1404A-1", 2000AT/2000AF, MCB, 480/277 VOLT, 3 PHASE, 4 WIRE, 50 KAIC, NEMA 1 ENCL.
  - 2 REMOVE SWITCHBOARD DISTRIBUTION BRANCH CIRCUIT BREAKERS SECTION "2000A, 480/277 VOLT, 3 PHASE, 4 WIRE, 50 KAIC, NEMA 1 ENCL.
  - 3 REMOVE UTILITY CO. (PEPCO) CURRENT TRANSFORMER (C/T) SECTION, 2000A, 480/277 VOLT, 3 PHASE, 4 WIRE, 50 KAIC, NEMA 1 ENCL.
  - 4 REMOVE DRY TYPE TRANSFORMER 500KVA, 480 VOLT - 120/208 VOLT, 3 PHASE, 4 WIRE, NEMA 1 ENCL.
  - 5 REMOVE SWITCHBOARD "SE-2N-1404A-1", 1600AT/1600AF, MCB, 120/208 VOLT, 3 PHASE, 4 WIRE, 65 KAIC, NEMA 1 ENCL.
  - 6 REMOVE SWITCHBOARD DISTRIBUTION BRANCH CIRCUIT BREAKERS SECTION "2000A, 120/208 VOLT, 3 PHASE, 4 WIRE, 65 KAIC, NEMA 1 ENCL.
  - 7 REMOVE FREE STANDING CABLES SECTION.
  - 8 35"W X 12"H X 45" D FULLBOX TO REMAIN.
  - 9 12"W X 12"H X 24" L FULLBOX TO REMAIN.
  - 10 34"W X 19"H X 46" D FULLBOX TO REMAIN.
  - 11 35"W X 20"H X 46" D FULLBOX TO REMAIN.
  - 12 REMOVE AND RELOCATE MOTOR CONTROL CENTER (MCC) "MC-4N-1404A-1" (MCC) 200A, 480 VAC, 3 PHASE, 3 WIRE, NEMA 1 ENCL. THIS INCLUDES DEMOLITION OF HOUSEKEEPING PAD.
  - 13 DEMOLISH 59" X 59" X 4" THICK HOUSEKEEPING PAD.
  - 14 CUTTING WALL FOR THE PROPOSED NEW DOOR (BY OTHERS).
  - 15 EXISTING COPPER GROUND BAR 4" W X 1" - 6" L X 1/4" THICK TO REMAIN.
  - 16 MODIFY EXISTING DOOR TO SWING EXTERIOR AND PROVIDE PANIC BARS. (BY OTHERS).
  - 17 UTILITY CO. (PEPCO) METERING CONDUIT 4 WIRING TO REMAIN.
  - 18 REMOVE EXISTING DS-4N-1404B-1, PROVIDE FULLBOX AND EXTEND FEEDER TO MATCH EXISTING TO DP-4N-1404-1. SEE POWER ONE- LINE DIAGRAM.

KEYED NOTES: NEW WORK

- 1 UTILITY CO. (PEPCO) STANDARD 3 PHASE METERING CURRENT TRANSFORMER (C/T) CABINET 1501A-2000A, 480/277 VOLT, NEMA 1 ENCL. (FBO)
- 2 NEW SWITCHBOARD "SE-4N-1404A-1" 2000A, MCB, 480/277 VOLT, 3 PHASE, 4 WIRE, 50KAIC, NEMA 1 ENCL.(FBO)
- 3 NEW DISTRIBUTION PANEL "DP-4N-1404A-1" BRANCH CIRCUIT BREAKERS SECTION 2000A, MLO, 480/277 VOLT, 3 PHASE, 4 WIRE, 50 KAIC, NEMA 1 ENCL.(FBO) SEE POWER SINGLE LINE DIAGRAM ON E2-01
- 4 NEW DRY TYPE TRANSFORMER "TX-4N-1404A-1", 500 KVA, 480V (DELTA) -120/208 VOLT (WYE), 3 PHASE, 4 WIRE, NEMA 1 ENCL.(FBO)
- 5 NEW SWITCHBOARD "SE-2N-404A-1", 1200A, MCB, 120/208 VOLT, 3PHASE, 4 WIRE, 50 KAIC, NEMA 1 ENCL. (FBO) . SEE POWER ONE- LINE DIAGRAM ON DUG. E2-01
- 6 NEW SWITCHBOARD DISTRIBUTION BRANCH CIRCUIT BREAKERS SECTION SWITCHBOARD 1200A, MLO, 120/208, VOLTS, 3 PHASE, 4 WIRE, NEMA 1 ENCL.(FBO) SEE POWER SINGLE LINE DIAGRAM ON E2-01
- 7 CONSTRUCT AND INSTALL NEW SINGLE DOOR WITH PANIC HARDWARE (FBO).
- 8 MODIFY EXISTING DOOR AND PROVIDE UMCP APPROVED PANIC HARDWARE.(FBO)
- 9 PROVIDE 1" DIA EMPTY CONDUIT WITH FULL WIRE. STUB OUT 5'-0" AFF. FOR UNIVERSITY FUTURE CONNECTION. ALSO SEE NOTE
- 10 UNIVERSITY METERING MODULE BY OTHERS.
- 11 PROVIDE #3/0 AWG INSULATED GROUND WIRE IN 1" DIA. CONDUIT.
- 12 2 SETS OF 3 - #600 KCMIL + 1 - #1/0 G, 4" CONDUIT
- 13 4 SETS - 4 - #400 KCMIL + 1 - #3/0 G, 3-1/2" CONDUIT.
- 14 CLEAN AND PAINT ELECTRICAL ROOM FLOOR WITH SAFETY GRAY EPOXY COLOR.
- 15 CLEAN AND PAINT SAFETY YELLOW EPOXY COLOR (3' - 0" ) FROM THE EDGE OF EXISTING HOUSEKEEPING PAD AND PERPENDICULAR TO THE NEW SWITCHBOARD.
- 16 EXTENDED HOUSEKEEPING PAD.
- 17 INSULATED #3/0 GROUND WIRE IN 1" CONDUIT.
- 18 INSULATED #3/0 GROUND WIRE IN 1" CONDUIT.
- 19 PROVIDE 1" DIA. EMPTY CONDUIT WITH FULL WIRE FOR UM INTERNAL METERING. STUBOUT 5'+6" AFF.
- 20 UMCP INTERFACE DATA BOX ( BY OTHERS)



BUILDING NAME  
**AVRUM GUDELSKY VETERINARY CENTER**

BUILDING NUMBER  
**795**

PROJECT NAME  
**REPLACE SWITCHBOARD**

Professional Certification:  
I hereby certify that this document was prepared or approved by me, and that I am duly licensed Professional Engineer under the laws of the State of Maryland.  
License Number: 29240  
Expiration Date: 6-19-2025

#	SUBMISSION	DATE
1	ISSUE FOR CONTRACTOR PRICING	9-26-22
2	ADDENDUM #1	11-30-22
3	SUBMISSION TO COUNTY	7-19-23

PROJECT NUMBER: FM22-11427

QC. #

DRAWN BY: CF

REVIEWED BY: AS/CO

DRAWING SCALE: AS NOTED

SUBMISSION PHASE

ISSUE FOR CONTRACTOR PRICING

SHEET TITLE  
**ELECTRICAL PLAN- MAIN ELECTRICAL RM DEMO AND NEW WORK**

DRAWING NUMBER  
**E1.01**  
3 OF 5